

SWIFT[®]

INSTALLATION QUICK START GUIDE

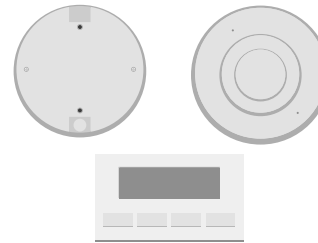
REQUIRED TOOLS AND EQUIPMENT TO CREATE MESH NETWORK



Small Flathead Screwdriver



Batteries
CR123A 3v
(Panasonic or Duracell)



SWIFT Devices
All SWIFT devices must be in
factory default.



SWIFT Device Bases

OPTIONAL TOOLS TO CREATE A MESH NETWORK

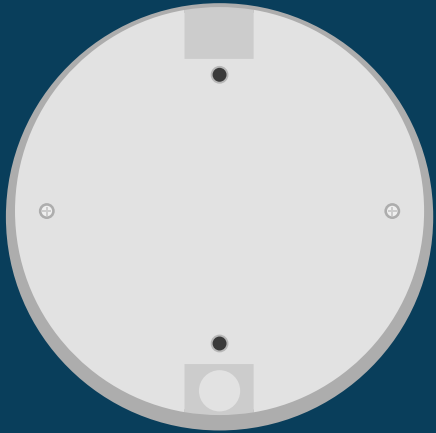


Windows Laptop with
SWIFT Tools Version 2.01



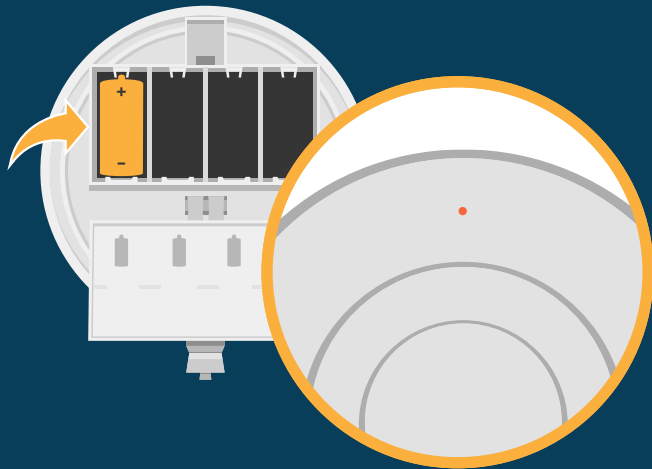
W-USB

BEFORE SWIFT INSTALLATION



Install Gateway

Its recommended that the gateway be installed in its final location, and wired prior to getting wireless devices up and running.



Make sure devices are in Factory Default

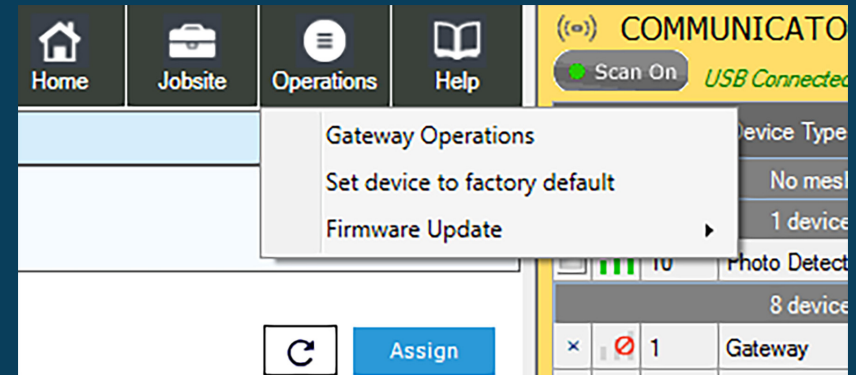
With the code wheels set to 000, insert one battery into the device. The LED on the front will blink red if the device is in factory default.

If the device is not in factory default, follow the process on the next page.

RESET DEVICES TO FACTORY DEFAULT

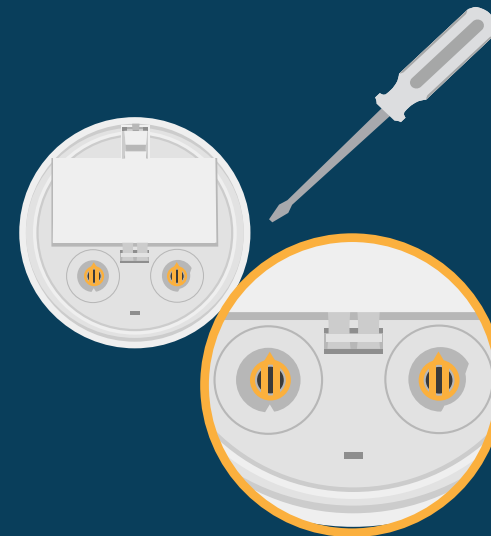
Using SWIFT tools:

1. Insert the W-USB dongle into your computer and launch the SWIFT Tools application.
2. On the home screen you can select **Site Survey**, **Create Mesh Network**, or **Diagnostics**.
3. Click **Operations** and select **Set device to factory default**.
4. You are now on the Reset Devices screen. Select the desired device, and click **Reset**.



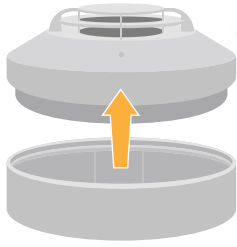
Manually:

1. Start with the device powered off.
2. Insert one single battery into any slot in the device. The LED will blink yellow once every 5 seconds for a minute.
3. Turn the SLC address wheels using a common screwdriver to 0, then to 159, then back to 0.
4. The device will blink green five times, followed by a single or double red blink. This is your confirmation the device is now on factory default.



WIRELESS DEVICE PREP

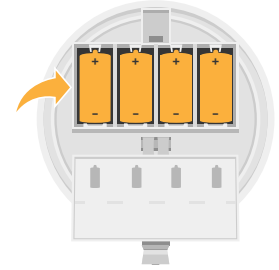
- 1 Tamper each device by removing the base or cover plate.



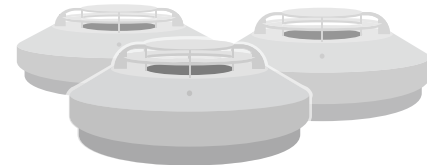
- 2 Address each device.



- 3 Insert all batteries into the devices.



- 4 Leaving the devices in tamper condition. Place the devices within range of the W-USB.

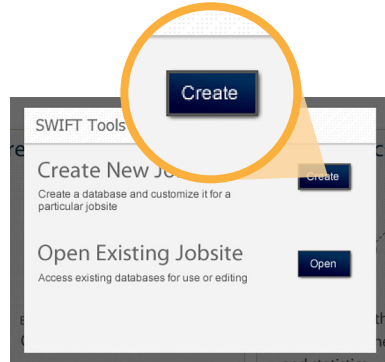


PROFILE ASSIGNMENT

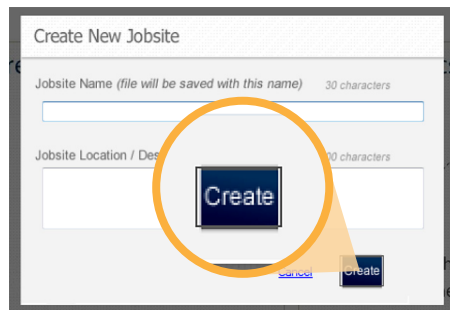
- 1 Insert the W-USB into your laptop's USB slot. Open SWIFT Tools.



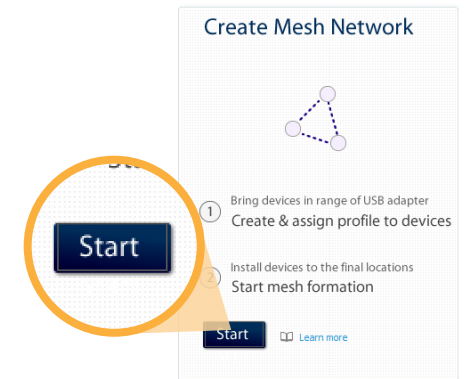
- 2 Click Create in Create New Jobsite
Note: An existing jobsite can also be used.



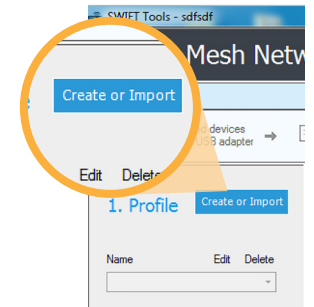
- 3 Enter jobsite information
 1. Enter jobsite name and Enter location / description
 2. Click Create



- 4 Click the **Start** button under Create Mesh Network.



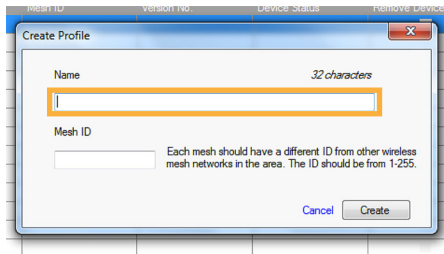
- 5 Click **Create or Import** a profile.



- 6 Click **Create New Profile**
Note: You can import profile from device by clicking **Import from Device**.

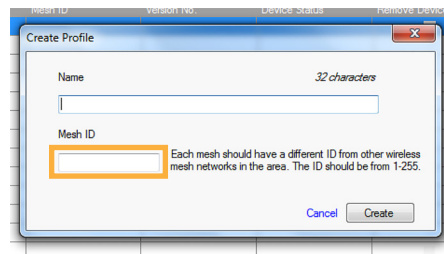


7 Name the profile

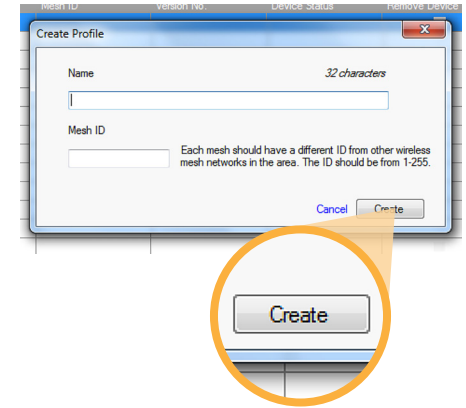


8 Assign a Mesh ID number, the number should be 1-255.

Note: Each Mesh should have a different ID.



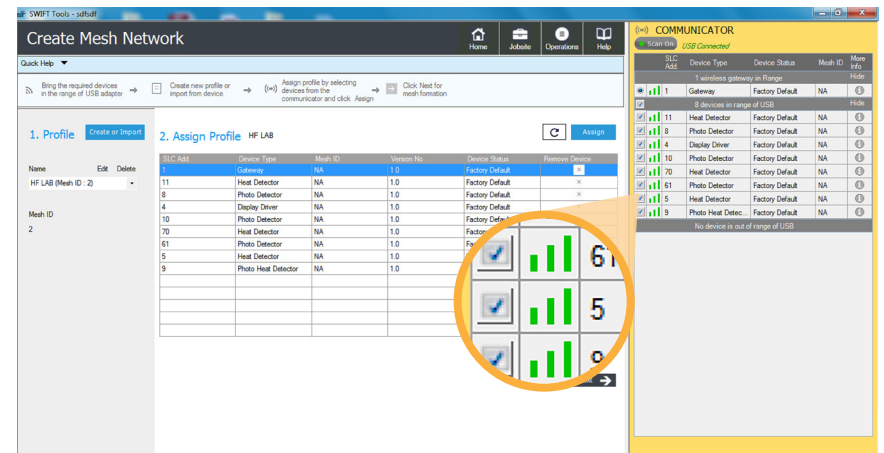
9 Click the **Create** button.



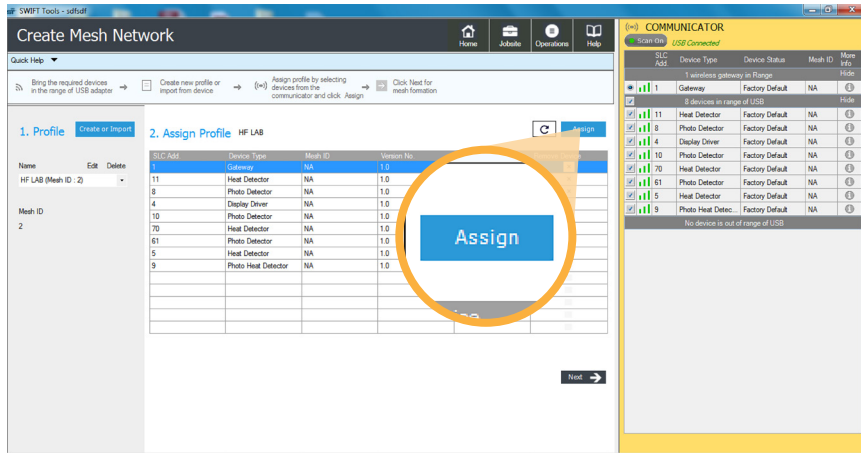
10 From the communicator, select the gateway and devices that the profile will be uploaded to.

When the mesh is formed these devices will be in a mesh network together.

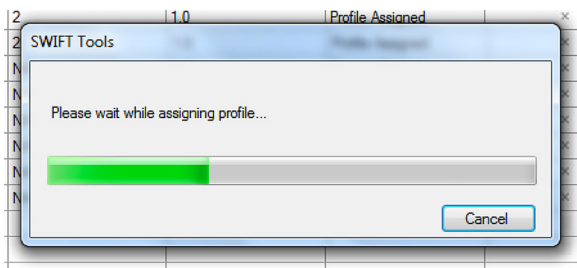
Note: To upload a profile to a device it must be in range. (Within 20 feet of the W-USB)



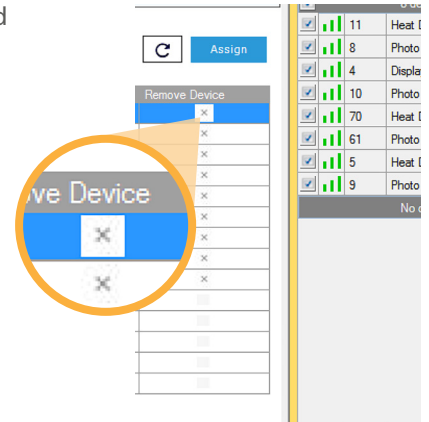
- 11 Once the devices are displayed in the Assign Profile section, click the **Assign** button.



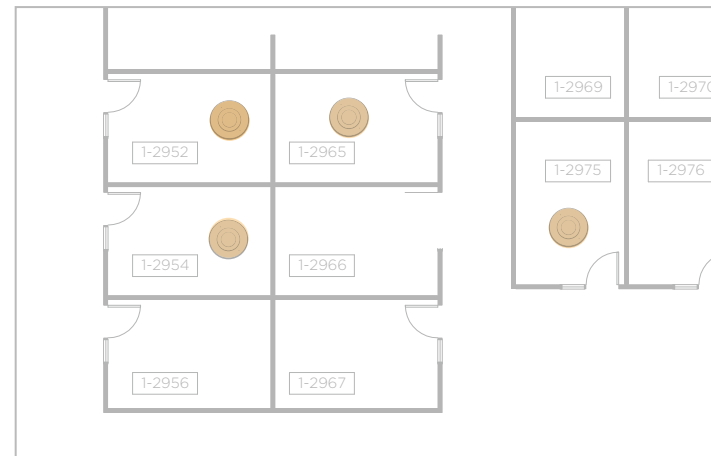
- 12 Profiles will now begin uploading to the chosen devices. This can take multiple minutes depending on the number of devices.



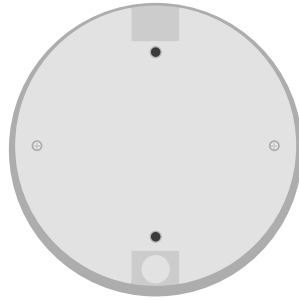
- 13 If more devices need to be assigned profiles, all devices that have been assigned profiles in the Assign Profile table must be removed by clicking the **x** prior to adding the new devices.



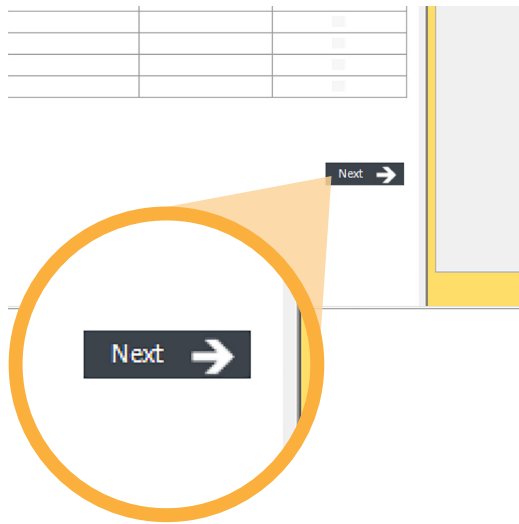
- 14 Mount all the devices in their final locations. Your laptop can be closed while mounting devices.



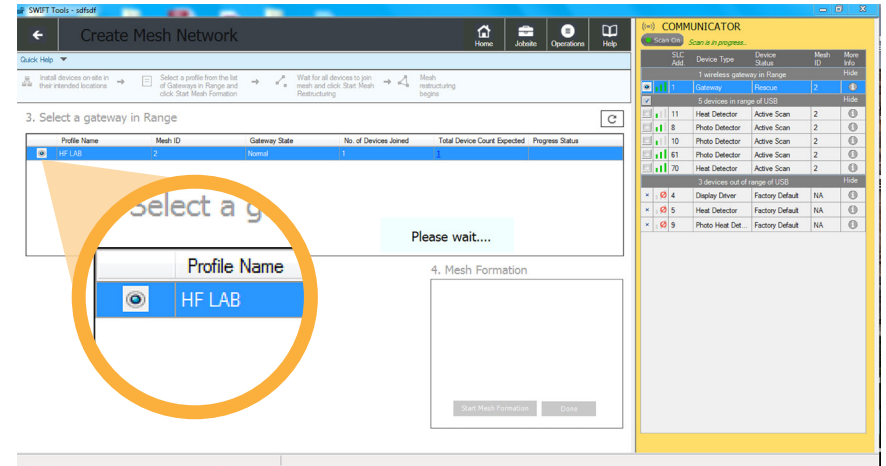
15 Once all the devices are mounted, get in range of the gateway. With your laptop and SWIFT tools open go to the profile assignment screen.



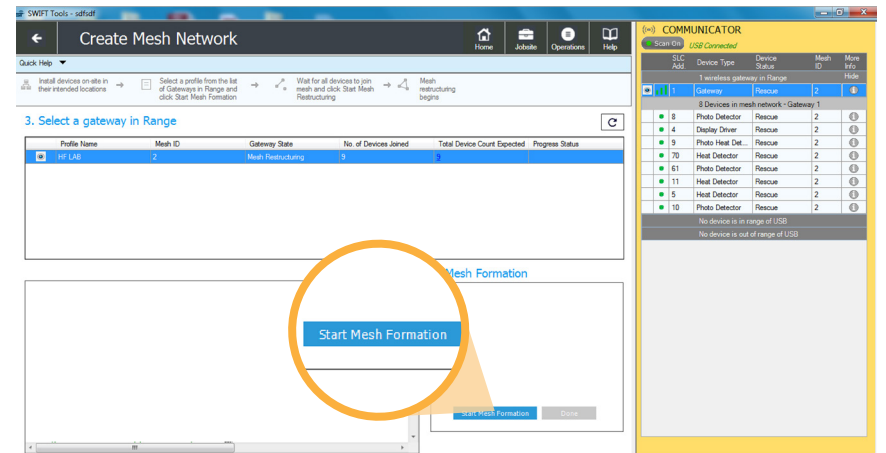
16 On the profile assignment screen, press **Next**. This will take you to the Mesh Formation Screen.



17 On the Mesh Formation Screen, select the profile from the Select a gateway in Range table.

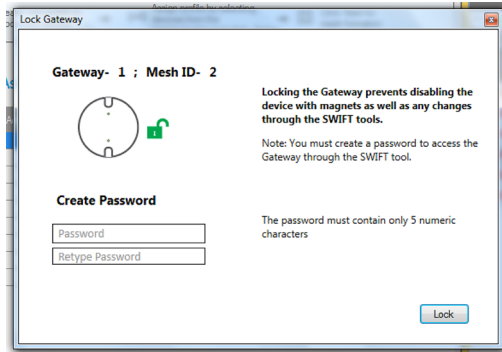


18 Click **Start Mesh Formation**

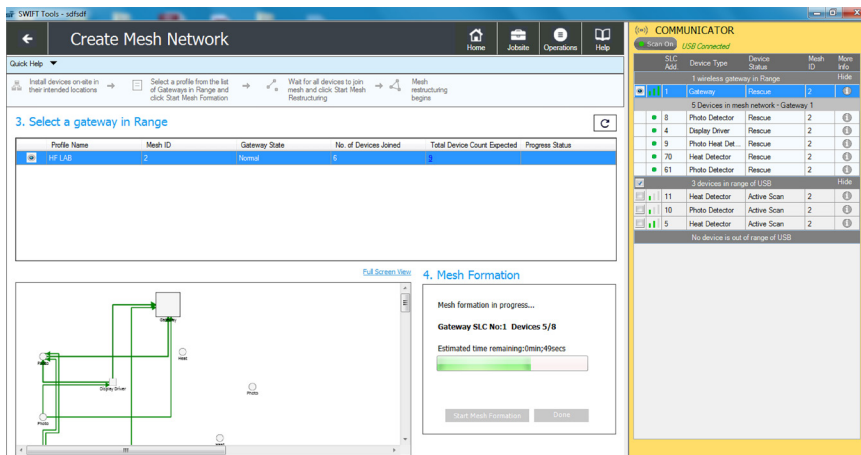


- 19 A Lock Gateway prompt will pop up. All gateways must be locked prior to mesh formation. Enter the password twice then click **Lock**.

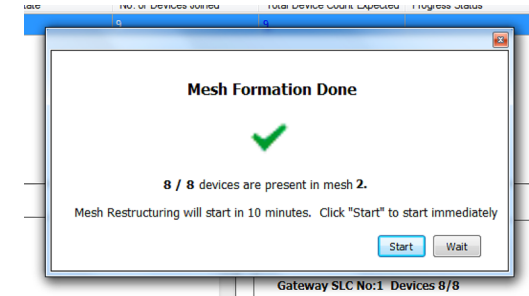
Note: Write this password down and put it in a secure place.



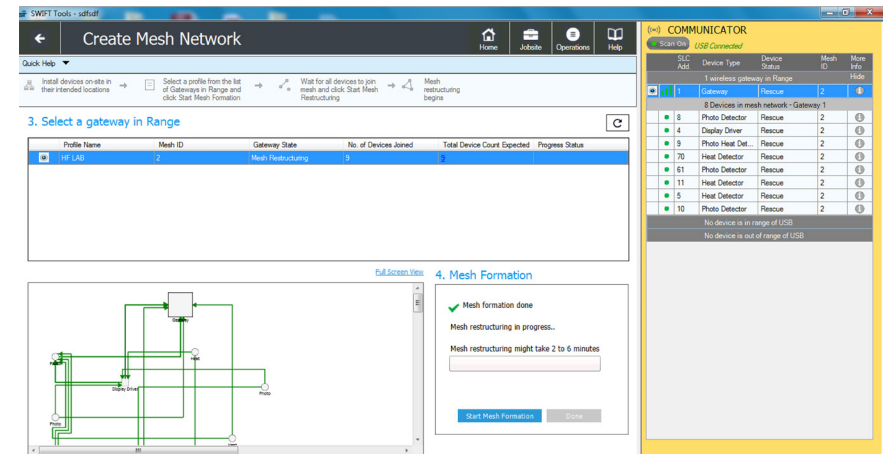
- 20 Mesh Network is now forming.



- 21 Once the mesh has formed, you can either start restructuring of the mesh manually or the system will do it automatically.



- 22 Mesh restructuring can take up to 6 minutes.



CONGRATULATIONS YOU HAVE FORMED A MESH NETWORK!

3. Select a gateway in Range

Profile Name	Mesh ID	Gateway State	No. of Devices Joined	Total Device Count Expected	Progress Status
HF LAB	2	Normal	9	9	

4. Mesh Formation

- ✓ Mesh formation done
- ✓ Mesh restructuring done

Congratulations !

Start Mesh Formation Done

COMMUNICATOR

USB Connected

SLC Add	Device Type	Device Status	Mesh ID	More Info
1 wireless gateway in Range				
1	Gateway	Normal	2	
8 Devices in mesh network - Gateway 1				
8	Photo Detector	Normal	2	
4	Display Driver	Normal	2	
9	Photo Heat Det...	Normal	2	
70	Heat Detector	Normal	2	
61	Photo Detector	Normal	2	
11	Heat Detector	Normal	2	
5	Heat Detector	Normal	2	
10	Photo Detector	Normal	2	

No device is in range of USB
No device is out of range of USB

For additional support

notifier.com

Customer Service:

203-484-7161

Tech Support

NOTIFIER.Tech@honeywell.com

800-289-3473